



Vices & Lubrication Equipments



Unyielding Products
Grasping Customer
faith & delivering
reliability for more than
4 decades



www.ajayind.com

ALL STEEL BENCH VICE HEAVY DUTY FIXED/SWIVEL BASE 3 IN 1

- The Vice is made out of steel plates & bars
- Steel Nut housed in body and gives long service
- Welded Pipe jaws to grip pipe
- Large Anvil
- Corrosion resistant, nickel plated handle
- Hardened, serrated jaws made of special alloy steel
- Two side screws for calibration
- Also available with 360 degree swivel base.

A-195

SIZE AVAILABLE mm	JAW WIDTH mm	OPENING mm	DEPTH mm	WEIGHT IN KGS	
				FIXED	SWIVEL
75	75	80	40	3	4
100	100	115	50	5.5	6.3
115	115	115	50	5.8	6.6
125	125	140	65	11.5	13
135	135	140	65	11.8	13.2
150	150	180	80	16	17.7
200	200	230	85	18	-
250	250	250	150	43	-
300	300	300	150	44	-

Swivel Base



Screw for Calibration



Gripping of Pipe





DROP FORGE BENCH VICE FIXED/SWIVEL

- All parts are forged from selected material
- Parts are machined on VMC to ensure for accurate precise working of bench vice
- Nut housed in body and gives long services & can be replaced
- Forged Pipe jaws to grip pipe
- Large hardened Anvil
- Corrosion resistant nickel plated handle
- Hardened fixed serrated steel jaws/replacable jaws, hardness of 42-48 HRC
- Lead screw with double thread so as to increase the efficiency
- Also available with 360 degree swivel base.

A-196/197

SIZE AVAILABLE mm	JAW WIDTH mm	OPENING mm	DEPTH mm	WEIGHT IN KGS	
				FIXED	SWIVEL
100	100	120	55	6.5	7.5
125	125	150	70	11	12.5
150	150	180	90	19	21
175	175	180	90	20.5	22.5

Swivel Base



Replacable Jaws



Gripping of Pipe



STEEL BENCH VICE HEAVY DUTY FIXED/SWIVEL

- The vice is made out of steel plates & bars
- Steel Nut housed in body and gives long service
- Welded pipe jaws to grip pipe
- Large Anvil
- Corrosion resistant nickel plated handle
- Hardened, serrated jaws made of special alloy steel
- Also available with 360 degree swivel base.

A-195/SB

SIZE AVAILABLE mm	JAW WIDTH mm	OPENING mm	DEPTH mm	WEIGHT IN KGS	
				FIXED	SWIVEL
75	75	80	40	3	4
100	100	115	50	5.5	6.3
115	115	115	50	5.8	6.6
125	125	140	65	11.5	13
135	135	140	65	11.8	13.2
150	150	190	80	16	17.7
200	200	230	85	18	-
250	250	250	150	43	-
300	300	300	150	44	-

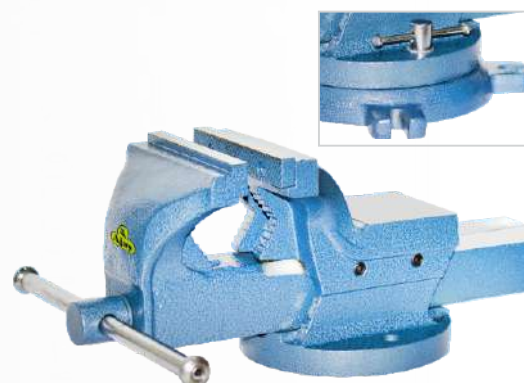


PROFESSIONAL INDUSTRIAL BENCH VICE FIXED/SWIVEL

- All parts made out of S.G Casting
- Parts are machined on VMC to ensure for accurate precise working of bench vice
- Nut housed in body and gives long service & can be replaced
- Pipe jaws to grip pipe
- End of the spindle rest on guide hole to align the lead screw
- Also available with 360 degree swivel base.

A-198/S

SIZE AVAILABLE mm	JAW WIDTH mm	OPENING mm	DEPTH mm	WEIGHT IN KGS	
				FIXED	SWIVEL
100	100	110	60	6	7
125	125	130	80	11	12
150	150	175	100	20	22



CAST IRON BENCH VICE FIXED /SWIVEL

- All parts Made out of Graded Grey Iron Casting
- Jaws made from carbon steel knurled & duly hardened
- Also available with 360 degree swivel base.

A-198

SIZE AVAILABLE mm	JAW WIDTH mm	OPENING mm	WEIGHT IN KGS	
			FIXED	SWIVEL
100	100	105	5	5.5
125	125	130	6	7
150	150	155	9.5	10.5



DROP FORGE VICE FIXED/SWIVEL WITH SQUARE STEEL BASE

- All parts are forged from selected material
- Parts are machined on VMC to ensure for accurate precise working of bench vice
- Nut housed in body and gives long services
- Square base made out of mild steel
- Large hardened Anvil
- Corrosion resistant nickel plated handle
- Lead screw with double thread so as to increase the efficiency of working.
- Also available with 360 degree swivel base.

A-196/SB

SIZE AVAILABLE mm	WEIGHT IN KGS	
	FIXED	SWIVEL
100	6.5	7.5
125	11	12.5
150	20	22



FABRICATED STEEL VICE LIGHT DUTY FIXED/SWIVEL

- The vice is made out of steel plates & bars
- Nut housed in body and gives long service
- Corrosion resistant nickel plated handle
- Hardened serrated jaws made of special alloy steel
- Also available with 360 degree swivel base.

A-194

SIZE AVAILABLE mm	WEIGHT IN KGS	
	FIXED	SWIVEL
75	3	3.7
100	4	5
125	5	6
150	6	7



MULTI PURPOSE BENCH VICE

- Made of graded cast iron
- Rotating 360° vice head with serrated jaws
- Parts are machined on VMC for accurate precision
- Hardened & tempered replaceable jaws alloy steel, hardness of 42-50 HRC
- Nut & pipe jaw made out of SG cast iron
- Powder coated body & chrome plated thread screw for corrosion resistance.

A-198MULTI

SIZE AVAILABLE mm	WEIGHT KGS
100	14
125	23
150	32



UTILITY BENCH VICE FIXED/SWIVEL

- Made of Graded Iron Casting
- Hardened & Tempered replaceable jaws alloy steel, Hardness of 42-50 HRC
- Powder coated finish

A-196/UBV

SIZE AVAILABLE mm	JAW WIDTH mm
100	100
125	125
150	150
200	200



PROFESSIONAL CYLINDRICAL VICE FIXED BASE

- Available in CI/SG Iron Casting
- Jaws- Alloy Steel Hardened and tempered serrated
- Large Anvil
- Powder coated finish.

A-198/S/CV

SIZE AVAILABLE mm	JAW WIDTH mm	WEIGHT KGS
80	80	8
100	100	11.5
125	125	14.5
150	150	18



PROFESSIONAL CYLINDRICAL BENCH VICE FIXED/SWIVEL

- Graded Cast Iron Body
- Hardened Steel Jaws

A-199

SIZE AVAILABLE mm	JAW WIDTH mm	PACKING MASTER CARTONS
80	80	4
100	100	4
125	125	2
150	150	1

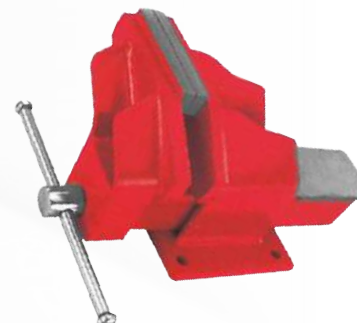


OFFSET STEEL BENCH VICE

- The jaws made of Carbon Steel
- Knurled and duly hardened

A-202

SIZE AVAILABLE INCHES	SIZE AVAILABLE mm	PACKING MASTER CARTONS
3	75	4
4	100	2
6	150	1

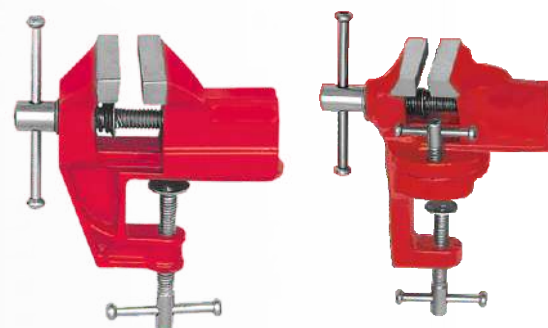


BABY VICE CLAMP TYPE/SWIVEL BASE

- Made out of Cast Iron

A-205/206

SIZE AVAILABLE mm	PACKING MASTER CARTONS	
	FIXED	SWIVEL
25	50	-
40	24	20
50	20	20
60	20	20
70	16	12

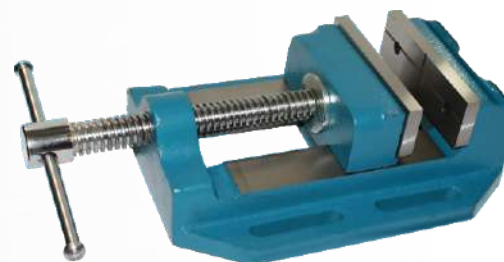


DRILL VICE HEAVY DUTY

- The Frame Made up Graded Cast Iron with forged spindle
- Jaws are made of En-8 Steel & Case Hardened for extra strength
- Horizontal 90°v Grooves for Gripping of round objects.

A-201/DV

SIZE AVAILABLE mm	SIZE AVAILABLE mm	PACKING MASTER CARTONS
3	75	10
4	100	2
5	125	2
6	150	1

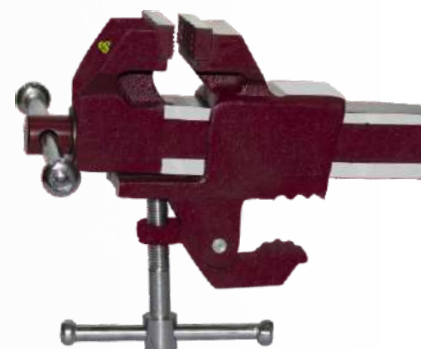


PROTABLE TABLE VICE CLAMP TYPE

- Strong cast iron frame & anvil
- 65 MM wide hard & tempered jaws
- Corrosion resistant nickel plated handle
- Table clamp can be installed & remove simple and rapidly with a few moments.

A-198/PV

SIZE AVAILABLE mm	OPENING mm	DEPTH mm	WEIGHT KGS
65	70	45	3.5



WOOD WORKING VICE

- Cast Iron Body with steel spindle & align rods
- Also available in Clamp type

A-208

SIZE AVAILABLE INCHES	SIZE AVAILABLE mm	PACKING MASTER CARTONS
6	150	8
7	175	6
8	200	6

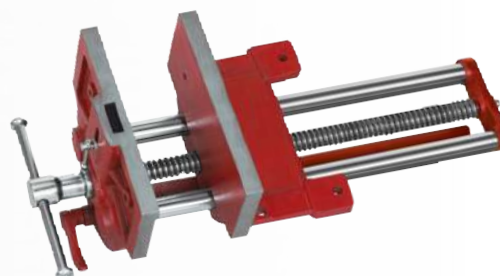


QUICK RELEASE CARPENTER BENCH VICE

- Clutch for quick Release System
- Two Parallel Steel Runner
- Front and Vertical Supports
- Cast Iron Steel

A/V/QR

SIZE AVAILABLE mm	WEIGHT KGS	PACKING MASTER CARTONS
225	15.5	1



HORIZONTAL BENCH PRESS

- Frame & Base Made of Mild Steel
- Screw DIA 18MM, Tighting Capacity 170MM

A-208/HPV

SIZE AVAILABLE mm	WEIGHT KGS
150	2.1

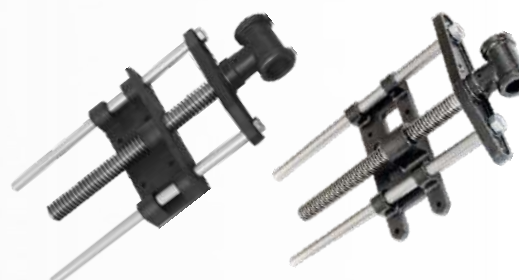


FRONT VICE

- The frame made up graded cast iron
- Parts are machined on VMC for accurate precision
- Connecting rods & spindle zinc plated

A-208/FV A-208/HFV

MAXIMUM OPENING mm	SPINDLE DIA	CONNECTING RODS	WEIGHT KGS
220	23	14	4.2
275	28	20	7.8



WORK BENCH VICE SPINDLE

- Made up grade cast iron
- Spindle Zinc plated

A-208/RPV

MAXIMUM OPENING mm	SPINDLE DIA	WEIGHT KGS
275	28	3.20



WORK BENCH SCREW

- Made out of mild steel
- Knurling Nut
- Corrosion resistant nickel plated

A-208/WBS

SIZE AVAILABLE mm	SPINDLE mm	WEIGHT KGS
175	18	4

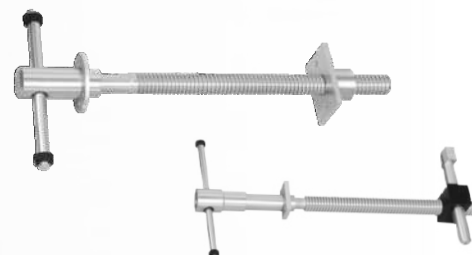


REAR BENCH PRESS/ SCREW BENCH

- All parts are Mild Steel
- Zinc Plated

A-208/SB A-208/RPV

WEIGHT KGS	PACKING MASTER CARTON
2.9	10
4	5



TIE ROD END LIFTER

- Both Legs made of Graded Cast Iron
- Bolt M-12

A/V/TRL

JAW OPENING mm	LENGTH mm	WEIGHT KGS
50	138	0.85



KEY WITH SPRING LEAF

- Made out of mildsteel
- Leaf made out of spring steel
- Knurling on face of jaw & Zinc Plated

A/V/KSL

SIZE AVAILABLE mm	WEIGHT KGS
140 x 13 x 20	0.3
200 x 18 x 25	0.7



BENCH DOG SMALL STEEL HEAD

- Carbon steel hardened tempered galvanized HRC35
- Flat end 2-3 Degree
- Head Size 30x15

A/V/BD

SIZE AVAILABLE mm	WEIGHT KGS
18.5	0.39
19.5	0.40



ANVIL

- Made from Graded Cast Iron/ SG Iron
- Smooth & polish surface
- One side horn other end taper face

SIZE AVAILABLE KGS	
0.5	25
1	30
2	40
5	50
10	75
20	100



A-211

SHOEMAKER'S ANVIL

- Made out of selected grade cast iron
- Powder Coated

WEIGHT KGS
2



A-211/SM

GREASE GUN (PUSH TYPE)

- Rigid spout or painted

A-190

CAPACITY GMS	CAPACITY OZ	PACKING MASTER CARTONS
2.9	4	80
4	8	60



ROTARY PUMP

- Cast iron housing, steel tubes

A-191

SIZE INCH	PACKING MASTER CARTONS
3/4	4
1	4
1.1/2	4



PUMP OILER

- Thumb lever action, steel or brass pump with flexed or flexible spout
- Available in Perfetto Type and Wesco Type.

A-192 A-193

SIZE CC	SIZE PINT	PACKING MASTER CARTONS
200	1/2	100
300	3/4	100
500	1	100
700	1.5	100
1000	2	100



SUCTION GUN

- Suction pump designed for use with oils to get them both in & out by transfer cases.
- With 12' flexible vinyl hose
- Available in plastic & steel body.

A-191/SG

INCH	CC
12"	500



PUMP OILER PLASTIC BODY

- Detachable rigid & flexible spouts
- Colour as per order
- Pump has two ball valve for large volume delivery per stroke

A-192/POC

SIZE PINT	INNER	PACKING MASTER CARTONS
1/2	10	100
1	10	100



BUCKET GREASE PUMP WITH/WITHOUT TROLLEY

- Quick and easy openable cover
- Adjustable carry handle
- Lever operated pump mounted on cover of drum
- Comes complete with 2.2 metre of high pressure hose fitted with accessories
- Removable handle
- Spring loaded disc is placed inside the drum to make positive pressure for easy pumping of grease.
- Delivery rate 4.25gram/stroke
- Working pressure up to-4000 psi

A-LE/BGP

SIZE IN KGS	WITH TROLLEY	WITHOUT TROLLEY	PACKING MASTER CARTONS
3	x	✓	1
6	✓	✓	1
10	✓	✓	1
15	✓	✓	1

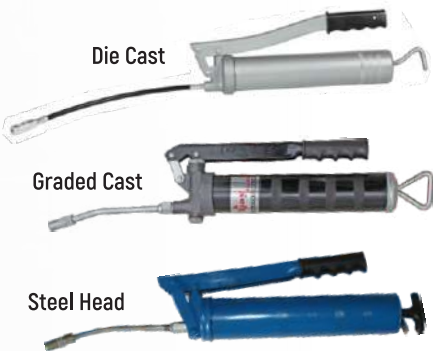


GREASE GUN (LEVER TYPE)

- With Flexible spout or fixed spout
- Available in die Cast, Graded Cast, Steel Head.
- TTYPE/ VTYPE Pulling Rod Available
- Powder Coated Body
- Highly Precise Piston used to develop high pressure

A-189

CAPACITY GMS	CAPACITY OZ
112	4
225	8
280	10
420	15
560	20



A-193A

SPARES FOR LUBRICATING TOOLS





Ajay Manufacturing Co.

Address:

B-22 Industrial Estate
Near Pathankot bye-pass Chowk,
Jalandhar, Punjab - 144008 (INDIA)

Website : www.ajaytools.com

Email : abhay@ajayind.com

Contact: +91 98555 26295

